

AI Automated Monitoring System

EasyMonitoring2

You do not need to go and check anymore.

Automates patrol work with image processing.

Simply install the camera at the location you want to watch, and you can monitor the area using image processing.

- ✔ Reduces labor costs and human errors.
- ✔ Prevents accidents during patrols.
- ✔ Acquires digital data from analog equipments.

※Supports two languages: English and Japanese

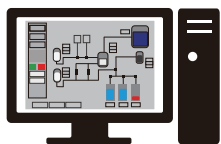


The system acquires images from network cameras, reads meters and detects objects, and makes pass/fail decisions, thereby automating the patrol work conventionally performed by human operators.

Processes images of monitoring targets at regular intervals, determines normality/abnormality, and records readings for each gauge.



Reviews recorded images of monitored targets and historical data.



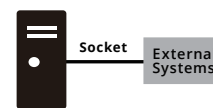
Emails with image files
Notifies with buzzer,
stacked signal light, etc.



Can connect 2~100 cameras
and read multiple
monitored targets in each
camera's image.




Supports Socket
communication with host
systems (SCADA, etc.).
Provides interface with
existing systems.



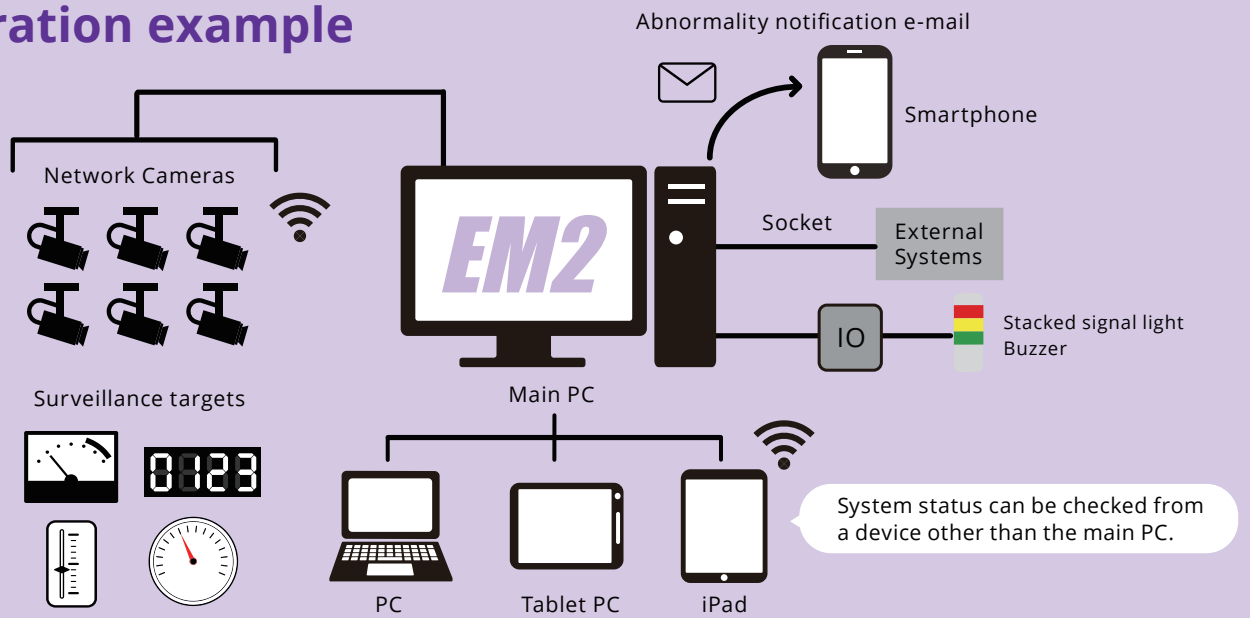
Packages and Features

EasyMonitoring2 consists of [Camera Management Software] and [Image Processing Software].
You can select EasyInspector2 features depending on what you want to monitor.

Gauges reading Reads analog meters, flow meters, float meters, etc.	Digital 7-segment display reading Digital display (7 segments), numerical readout	Lamps ON / OFF Reading Lamp state (control panel, etc.)	OCR Numerical readings from dot-matrix displays and PC monitors for centralized control.	Color and shape comparison Color of liquid or flame, condition of bubbles, powder or liquid leakage, amount of gravel, etc., orientation of valves
Position, width and angle measurement Measurement of liquid level height, width, height, position, and angle	Deep Learning Function Reading of vertically rotating power meters, reading of difficult-to-read characters.	Deep Learning Function Monitoring of human absence and entry into prohibited areas, insect contamination and animal intrusion.	Deep Learning Function Counting of parts and materials.	For more information, please visit our web site. 

▶▶▶ Based on the image processing package, additional functionality can be added as needed depending on the monitoring target.

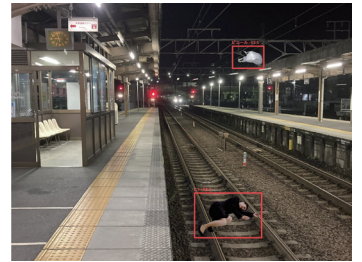
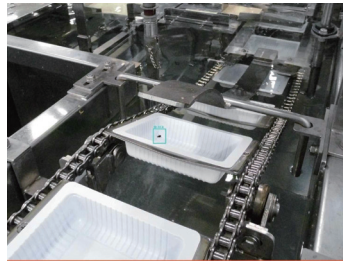
Configuration example



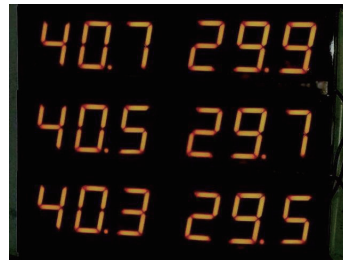
Deep Learning and Procedural Image Processing



- Objects can be detected even in locations with large environmental changes, such as outdoors.
- Since it can distinguish between the type of object and its location, it can determine “what and where” it was detected.
- Objects with individual variations can be detected with a human-like feeling.



- Various types of meters are supported (dial meter, bar meter, flow meter, 7-segment display, digital numeric, etc.)
- Judges pass/fail by detecting color (lamp, bulb orientation, fluid leakage, flame color, wastewater color, etc.)



Implementation record

- ▶ **Pulp and Paper Manufacturers**
Aeration tank condition monitoring
- ▶ **Construction industry**
Airflow measurement
- ▶ **Electrical appliance manufacturers**
Analog meter monitoring
- ▶ **Chemical manufacturers**
Analog meter monitoring, control panel display device monitoring, liquid condition monitoring
- ▶ **Electric and gas industry**
Control panel display device monitoring

We offer free image processing tests. Please feel free to contact us for any inquiry.



Inquiry Form

<https://deepskyweb.com/contact>



Skylogiq Co., Ltd.

3F, 23-5 Higashimikata-cho, Chuo-ku, Hamamatsu City, Shizuoka Prefecture, Japan

☎ 053-414-6209

✉ info@skylogiq.co.jp

🌐 <https://www.skylogiq.co.jp>

